

PRAXENT



Follow Us on WeChat

Gubersail Tyre (Jiangsu) Co., Ltd.

No. 1, Gubersail Avenue, Huai'an District,
Huai'an City, Jiangsu Province

info@gubersail.com

www.gubersail.com



PRAXENT

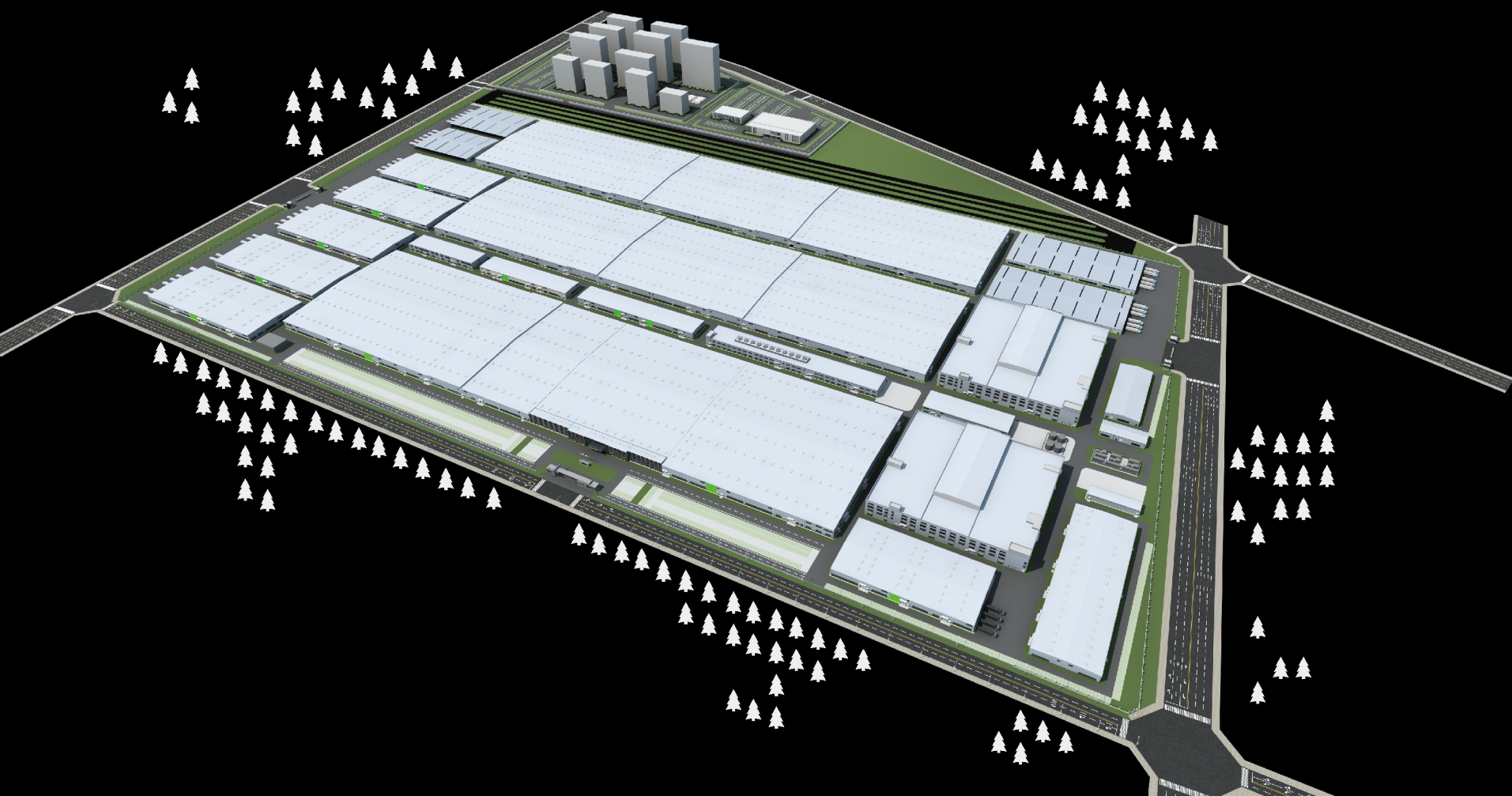
2025
PASSENGER
CAR TIRE CATALOG



GUBERSAIL SMART FACTORY

Industrial 4.0 Automated Factory

Smart Manufacturing · Strict Quality Control · Driving Brand Growth



85.6 Ha

Covered Area

650,000 m²

Building Area

ABOUT GUBERSAIL

Gubersail is a tire manufacturer that is user-demand oriented, performance-focused, and innovation-driven. Upholding the spirit of wisdom, eco-friendliness, efficiency and lean management, we pursue excellence in every detail, committed to delivering exceptional quality. We combine craftsmanship with service excellence to create extraordinary products, initiating a journey of freedom, exploring the infinite possibilities of the world together with every user.

ALL ABOUT PROGRESS

ABOUT PRAXENT

Craftsmanship with Visionary Precision

PRAXENT is a tire brand under Gubersail Factory.
Gubersail Factory is located in Huai'an City, Jiangsu Province, covering an area of 650,000 square meters. Equipped with advanced manufacturing equipment and a stringent quality control system, it is dedicated to producing tire products that feature safety, stability and high cost performance.

PRAXENT, derived from the combination of "Praxis" (from the Greek word $\pi\rho\alpha\tilde{\alpha}\xi\iota\varsigma$, meaning "practice, action, execution," and can also be extended to "competence in practical operations"; in philosophy, it often represents "the unity of knowledge and action") and "Excellent" (meaning "outstanding, superior"), signifies excellent execution capability, practicality, and exceptional performance in practice. It embodies the perfect integration of pragmatism and excellency, representing the convergence of pragmatic spirit and excellent quality.

What it stands for is PRAXENT's redefinition of tire brands:

Rooted in genuine manufacturing capabilities and technical standards

We produce tires for car owners who truly value "safety" and "value."

PRAXENT IS A RELIABLE, VALUE-DRIVEN CHOICE.





PRODUCT LINE-UP

HP	<i>Excelander PH08</i>	07
UHP	<i>Furijeter PU90</i>	11
EV	<i>Ēvoltour PEV80</i>	17
HT	<i>Patheris PT7</i>	23
VAN	<i>Robavans PV18</i>	27
ALL SEASON	<i>Seasonmaster PAS26</i>	31
WINTER	<i>Frostora PW30</i>	35
WINTER	<i>Frostora PW39</i>	39
STUD	<i>Bliztrac PW36</i>	43

Precise Control, Peaceful Ride

Excelander PH08

HP

Rim Size	13"-16"inch
Tread Width	155-235mm
Aspect Ratio	50-80
Speed Rating	H-V

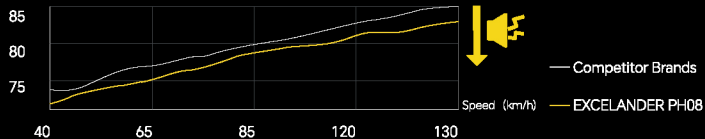
Eco-Efficient

The special rubber compound and optimized tread grooves significantly reduce rolling resistance, enhance energy efficiency, and reinforcing our eco-design philosophy.

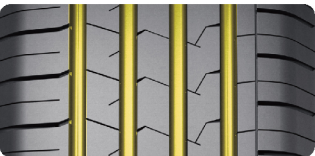


Quiet Comfort

By optimizing the tread design, the noise generated by the tire during driving is effectively reduced, creating a quiet and comfortable riding environment inside the vehicle while enhancing driving comfort.

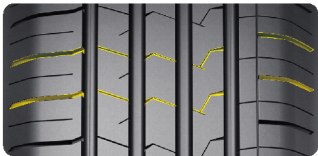


Centered on energy conservation, environmental protection, quiet comfort, and wetland safety, it integrates a special rubber compound, bionic noise-reduction tread patterns, and a four-longitudinal-groove drainage design. It balances low energy consumption, low noise, and high stability, adapts to diverse driving scenarios, and interprets the concept of green travel.



High Drainage

Four longitudinal grooves with a large-angle design effectively enhance water drainage performance.



High Comfort

The tire tread design is inspired by "seagull wings," and the narrower lateral grooves provide a quieter and more comfortable experience for drivers and passengers.



High Stability

Balanced tread block strength and low-density fine grooves ensure better wear resistance and stability of the tire.



Eco-Concept

Starting from raw material selection, we are committed to sustainability, using low-pollution materials to create greener and more eco-friendly tyres.



Inch	Size	Ply Rating	Speed Rating	Load Index	Load Capacity (kg)	Inflation Pressure (kpa)	Standard Rim	Section Width	Overall Diameter
13	155/80R13		T	79	437	240	4.50B	157	578
	155/65R13		T	73	365	250	4.50B	157	532
	NEW 155/70R13		T	75	387	250	4.50B	157	548
	165/65R13		T	77	412	250	5.00B	170	544
	165/70R13		T	79	437	250	5.00B	170	562
	175/60R13		H	77	412	250	5.00B	177	540
	175/70R13		T	82	475	250	5.00B	177	576
	NEW 185/70R13		H	86	530	250	5.50B	189	590
14	NEW 155/65R14		T	75	387	250	4½J	157	558
	NEW 175/60R14		H	79	437	250	5J	177	566
	NEW 175/75R14		T	86	530	250	5J	177	618
	NEW 185/55R14		H	80	450	250	6J	194	560
	NEW 195/60R14		H	86	530	250	6J	201	590
	NEW 195/65R14		H	89	580	250	6J	201	610

Excelander PH08

Inch	Size	Ply Rating	Speed Rating	Load Index	Load Capacity (kg)	Inflation Pressure (kpa)	Standard Rim	Section Width	Overall Diameter
14	NEW 195/70R14		H	91	615	250	6J	201	630
	NEW 205/60R14		H	88	560	250	6J	209	602
	NEW 215/70R14		H	96	710	250	6½J	221	658
	165/60R14		H	75	387	250	5J	170	554
	165/65R14		H	79	437	250	5J	170	570
	165/70R14		T	81	462	250	5J	170	588
	175/65R14		T	82	475	250	5J	177	584
	175/70R14		H	84	500	250	5J	177	602
	185/60R14		H	82	475	250	5½J	189	578
	185/65R14		H	86	530	250	5½J	189	596
	185/70R14		T	88	560	250	5½J	189	616
	205/70R14		H	95	690	250	6J	209	644
15	NEW 165/60R15	XL	H	81	462	290	5J	170	579
	NEW 175/60R15		H	81	462	250	5J	177	591
	215/65R15		H	96	710	250	6½J	221	661
	225/60R15		V	96	710	250	6½J	228	651
	175/65R15		H	84	500	250	5J	177	609
	185/55R15		H	82	475	250	6J	194	585
	185/60R15		H	84	500	250	5½J	189	603
	185/65R15		H	88	560	250	5½J	189	621
	NEW 195/50R15		V	82	475	250	6J	201	577
	NEW 195/55R15		V	85	515	250	6J	201	595
	195/60R15		H	88	560	250	6J	201	615
	195/65R15		H	91	615	250	6J	201	635
	205/60R15		H	91	615	250	6J	209	627
	205/65R15		H	94	670	250	6J	209	647
	NEW 205/70R15		H	96	710	250	6J	209	669
	NEW 215/70R15		H	98	750	250	6½J	221	683
	215/55R16		V	93	650	250	7J	226	642
	235/60R16		H	100	800	250	7J	240	688
	NEW 185/55R16		V	83	487	250	6J	194	610
	NEW 195/50R16	XL	V	88	560	290	6J	201	602
	NEW 195/55R16		V	87	545	250	6J	201	620
	195/60R16		H	89	580	250	6J	201	640
	205/55R16		H	91	615	250	6½J	214	632
	205/60R16		H	92	630	250	6J	209	652
	205/65R16		H	95	690	250	6J	209	672
	215/60R16		H	95	690	250	6½J	221	664
	215/65R16		H	98	750	250	6½J	221	686
	225/60R16		H	98	750	250	6½J	228	676

Extraordinary Control, Boundless Navigation

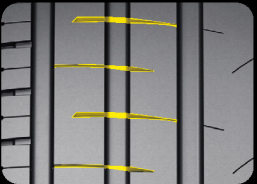
Furijeter PU90

UHP

Rim Size	15"-22"inch
Tread Width	185-315mm
Aspect Ratio	30-60
Speed Rating	H-Y

Optimized Tread Groove Design

The design of the tread's lateral grooves mimics the aerodynamic profile of a meteor's tail streaking across the night sky—smooth and highly dynamic. Even in a stationary state, it evokes a sense of readiness for speed, as if poised to surge forward at any moment.



Meteor-Inspired Sidewall Accents

The sidewall features a gradient line design echoing meteors. As the tire rolls, it resembles a meteor streaking across the road, endowing the vehicle with a dynamic beauty of lightning-fast speed.



1 Performance Upgrade - Excellent Handling

The inner through grooves, combined with the steel-belted inner shoulder pitch segments, form an efficient drainage system. This system can quickly cut through the water film, significantly reduce tire slippage, and enhance wetland performance.

The outer non-through grooves optimize the tread force distribution, enhance cornering control, and significantly improve the tire's handling stability.

2 Safety Upgrade - Excellent Dry/Wet Performance

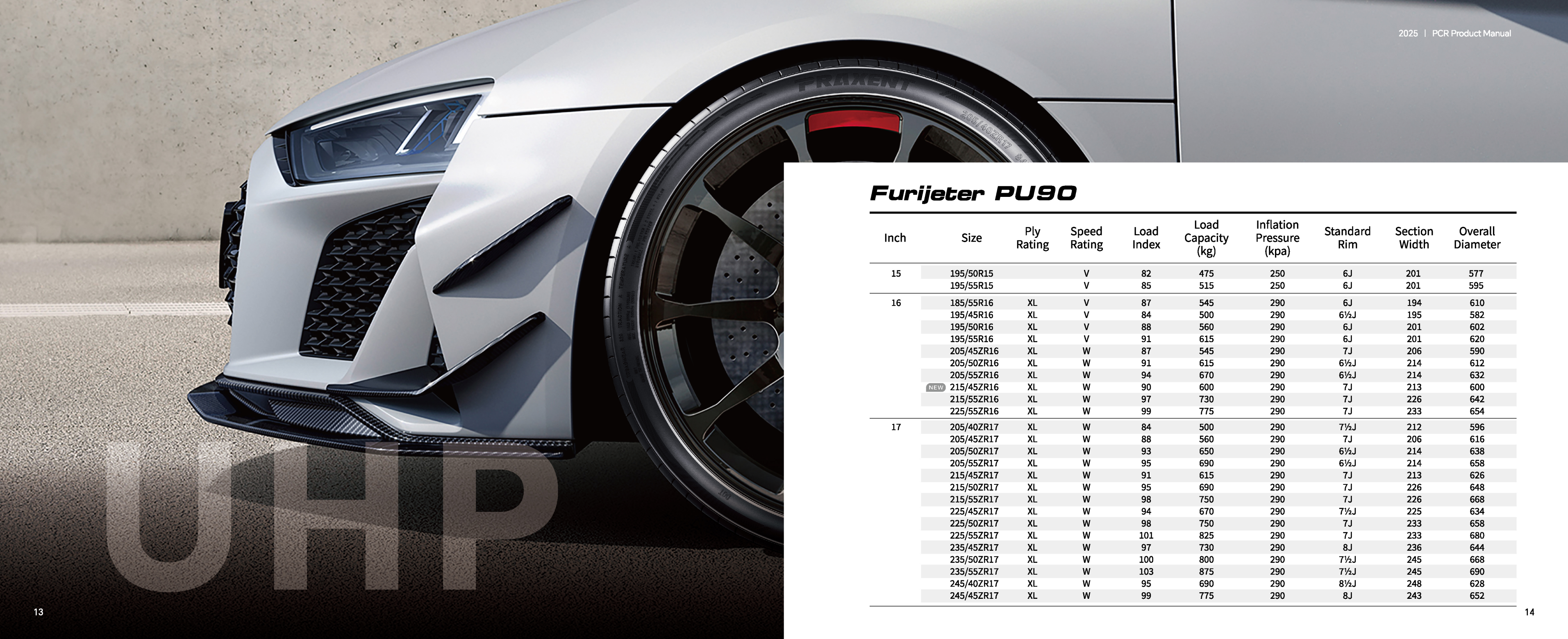
The adoption of four thick and wide straight longitudinal main grooves constructs an efficient drainage channel. This reduces the occurrence of hydroplaning, thereby enhancing wet braking performance and ensuring driving safety on slippery roads.

Larger tread blocks and an optimized pitch arrangement help enhance the tire's rigidity and stability, enabling better precise handling when driving on dry surfaces.

3 Formula Upgrade

The new rubber compound, manufactured using advanced technology, enhances the friction between the tire and the ground, providing excellent grip. Whether during high-speed acceleration or emergency braking, it enables the vehicle to respond promptly.





UHP

Furijeter PU90

Inch	Size	Ply Rating	Speed Rating	Load Index	Load Capacity (kg)	Inflation Pressure (kpa)	Standard Rim	Section Width	Overall Diameter
15	195/50R15		V	82	475	250	6J	201	577
	195/55R15		V	85	515	250	6J	201	595
16	185/55R16	XL	V	87	545	290	6J	194	610
	195/45R16	XL	V	84	500	290	6½J	195	582
	195/50R16	XL	V	88	560	290	6J	201	602
	195/55R16	XL	V	91	615	290	6J	201	620
	205/45ZR16	XL	W	87	545	290	7J	206	590
	205/50ZR16	XL	W	91	615	290	6½J	214	612
	205/55ZR16	XL	W	94	670	290	6½J	214	632
	NEW 215/45ZR16	XL	W	90	600	290	7J	213	600
	215/55ZR16	XL	W	97	730	290	7J	226	642
	225/55ZR16	XL	W	99	775	290	7J	233	654
17	205/40ZR17	XL	W	84	500	290	7½J	212	596
	205/45ZR17	XL	W	88	560	290	7J	206	616
	205/50ZR17	XL	W	93	650	290	6½J	214	638
	205/55ZR17	XL	W	95	690	290	6½J	214	658
	215/45ZR17	XL	W	91	615	290	7J	213	626
	215/50ZR17	XL	W	95	690	290	7J	226	648
	215/55ZR17	XL	W	98	750	290	7J	226	668
	225/45ZR17	XL	W	94	670	290	7½J	225	634
	225/50ZR17	XL	W	98	750	290	7J	233	658
	225/55ZR17	XL	W	101	825	290	7J	233	680
	235/45ZR17	XL	W	97	730	290	8J	236	644
	235/50ZR17	XL	W	100	800	290	7½J	245	668
	235/55ZR17	XL	W	103	875	290	7½J	245	690
	245/40ZR17	XL	W	95	690	290	8½J	248	628
	245/45ZR17	XL	W	99	775	290	8J	243	652

Furijeter PU90

Inch	Size	Ply Rating	Speed Rating	Load Index	Load Capacity (kg)	Inflation Pressure (kpa)	Standard Rim	Section Width	Overall Diameter
18	215/35ZR18	XL	W	84	500	290	7½J	218	607
	215/40ZR18	XL	Y	89	580	290	7½J	218	629
	215/45ZR18	XL	W	93	650	290	7J	213	651
	215/55ZR18	XL	W	99	775	290	7J	226	693
	225/40ZR18	XL	Y	92	630	290	8J	230	637
	225/45ZR18	XL	Y	95	690	290	7½J	225	659
	225/50ZR18	XL	W	99	775	290	7J	233	683
	225/55ZR18	XL	W	102	850	290	7J	233	705
	235/40ZR18	XL	Y	95	690	290	8½J	241	645
	235/45ZR18	XL	W	98	750	290	8J	236	669
	235/50ZR18	XL	W	101	825	290	7½J	245	693
	235/55ZR18	XL	W	104	900	290	7½J	245	715
	245/40ZR18	XL	Y	97	730	290	8½J	248	653
	245/45ZR18	XL	W	100	800	290	8J	243	677
	255/35ZR18	XL	Y	94	670	290	9J	260	635
	255/40ZR18	XL	W	99	775	290	9J	260	661
	255/45ZR18	XL	W	103	875	290	8½J	255	687
	255/55ZR18	XL	W	109	1030	290	8J	265	737
	265/35ZR18	XL	W	97	730	290	9½J	271	643
19	215/35ZR19	XL	W	85	515	290	7½J	218	633
	225/35ZR19	XL	Y	88	560	290	8J	230	641
	225/40ZR19	XL	W	93	650	290	8J	230	663
	225/45ZR19	XL	Y	96	710	290	7½J	225	685
	225/55R19	XL	V	103	875	290	7J	233	731
	235/35ZR19	XL	Y	91	615	290	8½J	241	647
	235/40ZR19	XL	W	96	710	290	8½J	241	671
	235/45ZR19	XL	Y	99	775	290	8J	236	695
	235/50ZR19	XL	W	103	875	290	7½J	245	719
	235/55ZR19	XL	W	105	925	290	7½J	245	741
	245/35ZR19	XL	Y	93	650	290	8½J	248	655
	245/40ZR19	XL	W	98	750	290	8½J	248	679
	245/45ZR19	XL	W	102	850	290	8J	243	703
	245/55ZR19	XL	W	107	975	290	7½J	253	753
	255/35ZR19	XL	Y	96	710	290	9J	260	661
	255/40ZR19	XL	Y	100	800	290	9J	260	687

Inch	Size	Ply Rating	Speed Rating	Load Index	Load Capacity (kg)	Inflation Pressure (kpa)	Standard Rim	Section Width	Overall Diameter
19	255/45ZR19	XL	W	104	900	290	8½J	255	713
	255/50ZR19	XL	W	107	975	290	8J	265	739
	255/55R19	XL	V	111	1090	290	8J	265	763
	275/35ZR19	XL	Y	100	800	290	9½J	278	675
	275/40ZR19	XL	W	105	925	290	9½J	278	703
	285/45ZR19	XL	W	111	1090	290	9½J	285	739
20	NEW 225/35ZR20	XL	W	90	600	290	8J	230	666
	235/55ZR20	XL	W	105	925	290	7½J	245	766
	245/35ZR20	XL	Y	95	690	290	8½J	248	680
	245/40ZR20	XL	W	99	775	290	8½J	248	704
	245/45ZR20	XL	W	103	875	290	8J	243	728
	NEW 255/35ZR20	XL	W	97	730	290	9J	260	686
	255/45ZR20	XL	Y	105	925	290	8½J	255	738
	255/50ZR20	XL	W	109	1030	290	8J	265	764
	255/55R20	XL	V	110	1060	290	8J	265	788
	NEW 265/45ZR20	XL	W	108	1000	290	9J	266	746
	265/50ZR20	XL	W	111	1090	290	8½J	277	774
	275/30ZR20	XL	Y	97	730	290	9½J	278	674
	275/35ZR20	XL	Y	102	850	290	9½J	278	700
	275/40ZR20	XL	W	106	950	290	9½J	278	728
	275/45ZR20	XL	W	110	1060	290	9J	273	756
	275/50R20	XL	V	113	1150	290	8½J	284	784
	275/55ZR20	XL	W	117	1285	290	8½J	284	810
	275/60R20	XL	V	119	1360	290	8J	279	838
	285/50R20	XL	H	116	1250	290	9J	297	794
	315/35ZR20	XL	W	110	1060	290	11J	320	728
21	NEW 235/45ZR21	XL	Y	101	825	290	8J	236	745
	275/40ZR21	XL	Y	107	975	290	9½J	278	753
	275/45ZR21	XL	W	110	1060	290	9J	273	781
	295/35ZR21	XL	Y	107	975	290	10½J	301	739
	295/40ZR21	XL	W	111	1090	290	10½J	301	769
	315/35ZR21	XL	Y	111	1090	290	11J	320	753
	315/40ZR21	XL	Y	115	1215	290	11J	320	785
22	NEW 285/35ZR22	XL	W	106	950	290	10J	290	759



Evoltour PEV80

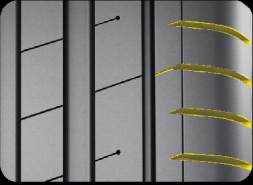
EV

Rim Size	17"-21"inch
Tread Width	205-255mm
Aspect Ratio	40-55
Speed Rating	V-W

Silence Unbounded, Serenity Unfettered

Intermittent Closed Grooves

The intermittent closed lateral groove design on the outer side reduces noise generated by air flow. The angle of the fine grooves is optimized to lower the overall noise of the tire. A unique noise-canceling channel is formed, providing drivers and passengers with a more comfortable driving experience.



Different Pitch

Tread blocks with irregular, varying pitch widths—designed in a staggered arrangement—effectively reduce resonance noise from contact with the road, creating a quiet in-car environment.



Tough 'Wear-Resistant', Lasting as New



New Formula

The new-generation solution-polymerized styrene-butadiene rubber formula, combined with the application of new materials, reduces tire rolling resistance, decreases electrical energy consumption, and increases driving range.

Wide Central Rib &Optimized Tread Arrangement

On the premise of ensuring performance, optimized tread pattern arrangement achieves lower rolling resistance, makes the wear between the tread and the ground more uniform, and enhances the tire's wear resistance.



Instant Stop, 'Safety' Shields



Multi-Directional Tread Design

The multi-angle tread design enhances the tire's grip during acceleration and steering. The outer longitudinal tread grooves adopt a semi-wide design, and both sides of the grooves feature an intermittent non-groove design, which effectively improves the tire's handling performance.



High Drainage Performance

The semi-closed shoulder on the outer side enhances handling performance, while the open shoulder on the inner side improves water drainage. This ensures sufficient safety on wet and slippery roads.



Optimized Tread Pattern

By adjusting the tread pattern and optimizing the tread pressure distribution, the tire is ensured to bear force evenly during driving, which greatly enhances grip.

Silent Endurance, Efficient Assurance

Engineered exclusively for electric vehicles, it centers on quietness & noise reduction, long-range durability, wet-road handling, and structural stability. Integrating intermittent closed grooves, solution-polymerized styrene-butadiene rubber formula, multi-directional water-draining tread, and high-strength carcass design, it strikes a balance between high-performance driving, comfort, and energy efficiency.

Evoltour PEV80



Ultimate Silence

Intermittent closed grooves and irregular pitch tread design effectively block air resonance noise, creating a quiet in-car environment.

Safe & Stable

Multi-directional tread and semi-closed shoulder design enhance grip; high-drainage grooves tackle wet roads; high-strength carcass ensures handling stability.

Comfortable Ride

Seamless nylon belt and balanced cord design reduce deformation and vibration, delivering a smooth, gentle driving experience.

Super Wear-Resistant

The new-generation solution-polymerized styrene-butadiene formula, paired with optimized tread arrangement, reduces abnormal wear and significantly extends tire lifespan.

Stable Structure, Safe & Comfortable

Enhance Structural Stability

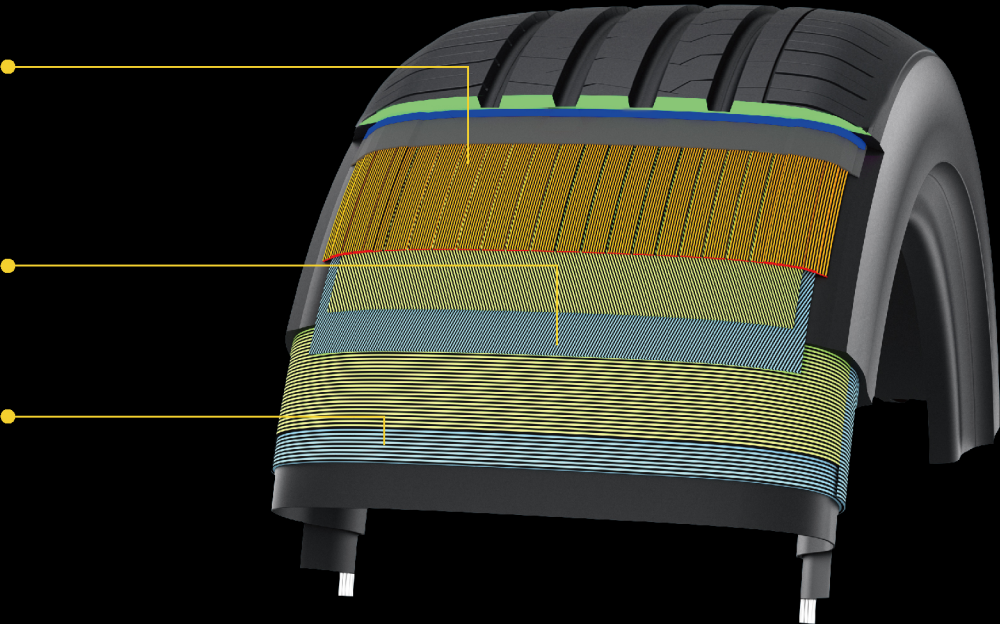
The seamless nylon belt layer provides excellent support for the tire, ensuring stability during vehicle operation.

High-Tensile Steel Belts

Increasing the hardness and toughness of the tire crown makes the tire less likely to deform, ensuring its stability and safety.

Balanced Carcass Cord Design

Reduce tire deformation to improve vehicle stability.





Evoltour PEV80

Inch	Size	Ply Rating	Speed Rating	Load Index	Load Capacity (kg)	Inflation Pressure (kpa)	Standard Rim	Section Width	Overall Diameter
17	205/50ZR17	XL	W	93	650	290	6½J	214	638
	205/55R17	XL	V	95	690	290	6½J	214	658
	215/50R17	XL	V	95	690	290	7J	226	648
	215/55R17	XL	V	98	750	290	7J	226	668
18	235/45ZR18	XL	W	98	750	290	8J	236	669
	255/45ZR18	XL	W	103	875	290	8½J	255	687
19	235/40ZR19	XL	W	96	710	290	8½J	241	671
	235/50R19	XL	V	103	875	290	7½J	245	719
	245/45ZR19	XL	W	102	850	290	8J	243	703
	255/40ZR19	XL	W	100	800	290	9J	260	687
	255/45ZR19	XL	W	104	900	290	8½J	255	713
20	235/50ZR20	XL	W	104	900	290	7½J	245	744
	245/50ZR20	XL	W	105	925	290	7½J	253	754
	255/45ZR20	XL	W	105	925	290	8½J	255	738
	255/50R20	XL	V	109	1030	290	8J	265	764
	255/55ZR20	XL	W	110	1060	290	8J	265	788
21	255/45ZR21	XL	W	106	950	290	8½J	255	763

Roads Unfazed, Journeys Unchained



Patheris PT7

HT



Rim Size	15"-22" inch
Tread Width	205-285mm
Aspect Ratio	45-75
Speed Rating	H-W

Reduce Tire Noise

Breaking the perception that "wear-resistant tires must be noisy" — through Pitch Sequence Optimization, the number and arrangement of pitches are optimized, which can significantly reduce tire noise.



Wetland Safety

Addressing the concern that "wear-resistant tires have poor grip," the horizontal grooves feature a combined design of grooves and steel sheets: they provide stronger grip and maneuverability. On wet and slippery roads, the grooves ensure water drainage performance to prevent skidding.



Light Off-road Capability

Expanding the range of application scenarios, the spaced design of steel sheets and grooves for various road conditions can reduce the probability of stones or other debris getting stuck in the tread pattern, thereby lowering the risk of tire damage.

Ratio of Grooves to Steel Sheets

Half-steel-sheet and half-groove balanced design: This design results in relatively fine and regularly shaped tread blocks. It can increase the contact area between the tire and the ground, enhance grip and handling on dry roads, and make the vehicle more stable during high-speed driving and cornering.



Symmetric Pattern Design

Uniform wear:

The symmetric tread pattern design ensures that the tread distribution on both left and right sides of the tire is completely consistent, which guarantees even force distribution during tire rolling, avoids uneven wear, and thus extends the service life of the tire.

Patheris PT7

Inch		Size	Ply Rating	Speed Rating	Load Index	Load Capacity (kg)	Inflation Pressure (kpa)	Standard Rim	Section Width	Overall Diameter
15	NEW	215/75R15		H	100	800	250	6J	216	703
		205/70R15		H	96	710	250	6J	209	669
		255/70R15		H	108	1000	250	7½J	260	739
16		215/65R16		H	98	750	250	6½J	221	686
		215/70R16		H	100	800	250	6½J	221	708
		225/70R16		H	103	875	250	6½J	228	722
		235/60R16		V	100	800	250	7J	240	688
		235/70R16		H	106	950	250	7J	240	736
	NEW	245/70R16		H	107	975	250	7J	248	750
		255/70R16		H	111	1090	250	7½J	260	764
	NEW	265/70R16		H	112	1120	250	8J	272	778
	NEW	275/70R16		H	114	1180	250	8J	279	792
17		215/60R17		H	96	710	250	6½J	221	690
		215/65R17		V	99	775	250	6½J	221	712
		225/60R17		V	99	775	250	6½J	228	702
		225/65R17		V	102	850	250	6½J	228	724
		235/55R17		V	99	775	250	7½J	245	690
	NEW	235/60R17		H	102	850	250	7J	240	714
		235/65R17	XL	V	108	1000	290	7J	240	738
		245/65R17		H	107	975	250	7J	248	750
		265/65R17		H	112	1120	250	8J	272	776
	NEW	265/70R17		H	115	1215	250	8J	272	804
18		285/65R17		H	116	1250	250	8½J	292	802
		215/55R18		V	95	690	250	7J	226	693
		225/55R18		V	98	750	250	7J	233	705
		225/60R18		H	100	800	250	6½J	228	727
		235/55R18		V	100	800	250	7½J	245	715
		235/60R18	XL	V	107	975	290	7J	240	739

Inch		Size	Ply Rating	Speed Rating	Load Index	Load Capacity (kg)	Inflation Pressure (kpa)	Standard Rim	Section Width	Overall Diameter
18		235/65R18		H	106	950	250	7J	240	763
		245/60R18		V	105	925	250	7J	248	751
		255/55ZR18	XL	W	109	1030	290	8J	265	737
		255/60R18		H	108	1000	250	7½J	260	763
		265/60R18		H	110	1060	250	8J	272	775
	NEW	265/65R18		H	114	1180	250	8J	272	801
19		265/70R18		T	116	1250	250	8J	272	829
		225/55R19		V	99	775	250	7J	233	731
		235/45R19		V	95	690	250	8J	236	695
		235/50R19		V	99	775	250	7½J	245	719
		235/55R19	XL	V	105	925	290	7½J	245	741
		245/55ZR19		W	103	875	250	7½J	253	753
		255/45R19		V	100	800	250	8½J	255	713
		255/50ZR19	XL	W	107	975	290	8J	265	739
		255/55R19	XL	V	111	1090	290	8J	265	763
		265/50ZR19	XL	W	110	1060	290	8½J	277	749
20		275/55ZR19		W	111	1090	250	8½J	284	785
		235/55R20	XL	V	105	925	290	7½J	245	766
		265/45ZR20		W	104	900	250	9J	266	746
		265/50R20	XL	V	111	1090	290	8½J	277	774
		275/50ZR20	XL	W	113	1150	290	8½J	284	784
		275/60R20		H	115	1215	250	8J	279	838
		285/50R20		V	112	1120	250	9J	297	794
21		265/45R21	XL	V	108	1000	290	9J	266	771
		275/45ZR21	XL	W	110	1060	290	9J	273	781
		275/50R21	XL	V	113	1150	290	8½J	284	809
22		275/50R22		V	111	1090	250	8½J	284	835

A Companion for Long Journeys, A Choice for Peace of Mind.

Robavans PV18

VAN

Designed specifically for highway driving, it boasts exceptional wear resistance, providing longer mileage protection. It's robust structural support ensures stability and safety during high-speed travel—making every journey both worry-free and reassuring.

Rim Size	13"-17" inch
Tread Width	155-235mm
Speed Rating	Q-T

Safe and Wear-Resistant

The intricate, zigzag fine patterns evenly divide the area of large tread blocks, ensuring the tire bears force uniformly when in contact with the ground. This promotes balanced wear and extends its service life.

Professional Load-Bearing

The semi-open shoulder design, featuring large tread blocks with mutual support formed by an integrated structure of radially reinforced center ribs, ensures sufficient rigidity. This not only endows the tire with design aesthetics but also provides professional logistics capabilities and load-bearing stability.





Robavans PV18

Inch	Size	Ply Rating	Speed Rating	Load Index	Load Capacity (kg)	Inflation Pressure (kpa)	Standard Rim	Section Width	Overall Diameter
13	175R13LT	8PR	S	97/95	730/690	450	5.00B	177	610
	<small>NEW</small> 155R13C		Q	85/83	1030/1948	350	4.5J	157	578
	165R13C		R	91/89	1230/2320	375	4.5J	167	596
14	175/70R14C		S	95/93	1380/2600	375	5J	177	602
	185R14C		R	102/100	1700/3200	450	5.5J	188	650
	195R14C		R	106/104	1900/3600	450	5.5J	198	666
15	185R15C		R	103/102	1750/3400	450	5.5J	188	674
	195/70R15C		R	104/102	1800/3400	450	6J	201	655
	195R15C		R	106/104	1900/3600	450	5.5J	198	690
	215/65R15C		S	104/102	1800/3400	375	6.5J	221	661
	215/70R15C		R	109/107	2060/3900	450	6.5J	221	683
	225/70R15C		S	112/110	2240/4240	450	6.5J	228	697
16	<small>NEW</small> 175R16C		Q	98/96	1500/2840	375	5J	178	684
	185/75R16C		R	104/102	1800/3400	475	5J	184	684
	195/65R16C		R	104/102	1800/3400	475	6J	201	660
	195/75R16C		R	107/105	1950/3700	475	5.5J	196	698
	205/65R16C		T	107/105	1950/3700	475	6J	209	672
	205/75R16C		R	110/108	2120/4000	475	5.5J	203	714
	<small>NEW</small> 215/60R16C		T	108/106	2000/3800	475	6.5J	221	664
	215/65R16C		S	109/107	2060/3900	475	6.5J	221	686
	215/75R16C		R	113/111	2300/4360	475	6J	216	728
	225/65R16C		S	112/110	2240/4240	475	6.5J	228	698
	<small>NEW</small> 225/75R16C		R	121/120	2900/5600	575	6J	223	744
	235/65R16C		R	115/113	2430/4600	475	7J	240	712
17	215/60R17C		T	109/107	2060/3900	475	6.5J	221	690

Season-adaptable,
Smooth All Year Round

Seasonmaster PAS26

ALL SEASON

Rim Size	13"-18"inch
Tread Width	155-245 mm
Aspect Ratio	40-80
Speed Rating	H-W

1 Drainage Design

The V-shaped tread pattern offers superior water drainage, significantly reducing braking distances on wet and slippery roads. It also increases the tire's contact area with the ground, evenly distributing acceleration, braking, and cornering forces—effectively extending service life.

2 Grip Design

The dense lateral groove design, like multiple tiny "blades," can more efficiently slice through the water film between the tire and the road surface, allowing the tread rubber to make more direct contact with the road and reducing the hydroplaning.

3 Water Drainage & Snow Clearance

The large groove design between the tread patterns enables rapid drainage of standing water on the road, preventing hydroplaning. On snow-covered roads, these grooves can hold snow chunks, preventing snow from accumulating and compacting on the tread—a problem that would compromise grip—thus ensuring effective contact between the tire and the ground.

4 Grip Assurance

The numerous "micro-edges" formed by the fine grooves in the tread blocks can embed into the tiny unevenness of the road surface, enhancing friction through mechanical interlocking. Meanwhile, the dense grooves on the tread can quickly drain the water film between the tread and the ground, allowing the rubber to make direct contact with the road surface and preventing "hydroplaning" on rainy days.



All-Time Adaptable, Easily Handles Diverse Road Conditions. From roaming through spring's flower seas to weaving through winter's city streets, all-season tires safeguard every journey of yours with uncompromising, all-round performance.



Inch	Size	Ply Rating	Speed Rating	Load Index	Load Capacity (kg)	Inflation Pressure (kpa)	Standard Rim	Section Width	Overall Diameter
13	155/65R13		T	73	365	250	4.50B	157	532
	155/70R13		T	75	387	250	4.50B	157	548
	155/80R13		T	79	437	240	4.50B	157	578
	165/70R13		T	79	437	250	5.00B	170	562
	175/70R13		T	82	475	250	5.00B	177	576
14	155/65R14		T	75	387	250	4½J	157	558
	165/65R14		T	79	437	250	5J	170	570
	165/70R14		T	81	462	250	5J	170	588
	175/65R14	XL	T	86	530	290	5J	177	584
	175/70R14	XL	T	88	560	290	5J	177	602
	185/55R14		H	80	450	250	6J	194	560
	185/60R14		H	82	475	250	5½J	189	578
	185/65R14		H	86	530	250	5½J	189	596
	185/70R14		H	88	560	250	5½J	189	616

Seasonmaster PAS26

Inch	Size	Ply Rating	Speed Rating	Load Index	Load Capacity (kg)	Inflation Pressure (kpa)	Standard Rim	Section Width	Overall Diameter
15	175/60R15		T	81	462	250	5J	177	591
	175/65R15		H	84	500	250	5J	177	609
	185/55R15		H	82	475	250	6J	194	585
	185/60R15	XL	H	88	560	290	5½J	189	603
	185/65R15		H	88	560	250	5½J	189	621
	195/50R15		V	82	475	250	6J	201	577
	195/55R15		V	85	515	250	6J	201	595
	195/60R15		H	88	560	250	6J	201	615
	195/65R15		H	91	615	250	6J	201	635
	205/65R15		H	94	670	250	6J	209	647
16	195/45R16	XL	V	84	500	290	6½J	195	582
	195/55R16	XL	V	91	615	290	6J	201	620
	205/55R16	XL	V	94	670	290	6½J	214	632
	205/60R16	XL	H	96	710	290	6J	209	652
	215/55R16	XL	V	97	730	290	7J	226	642
	215/60R16	XL	H	99	775	290	6½J	221	664
	215/65R16	XL	H	102	850	290	6½J	221	686
	225/55R16	XL	V	99	775	290	7J	233	654
17	205/45ZR17	XL	W	88	560	290	7J	206	616
	205/50R17	XL	V	93	650	290	6½J	214	638
	215/45ZR17	XL	W	91	615	290	7J	213	626
	215/50R17	XL	V	95	690	290	7J	226	648
	215/55R17	XL	V	98	750	290	7J	226	668
	215/60R17	XL	V	100	800	290	6½J	221	690
	225/45ZR17	XL	W	94	670	290	7½J	225	634
	225/50R17	XL	V	98	750	290	7J	233	658
	225/55R17	XL	V	101	825	290	7J	233	680
	225/60R17	XL	H	103	875	290	6½J	228	702
	225/65R17	XL	H	106	950	290	6½J	228	724
	235/45ZR17	XL	W	97	730	290	8J	236	644
	235/55R17	XL	V	103	875	290	7½J	245	690
	235/65R17	XL	V	108	1000	290	7J	240	738
18	225/40ZR18	XL	W	92	630	290	8J	230	637
	225/45ZR18	XL	W	95	690	290	7½J	225	659
	235/50R18	XL	V	101	825	290	7½J	245	693
	245/40ZR18	XL	W	97	730	290	8½J	248	653
	245/45ZR18	XL	W	100	800	290	8J	243	677

Conquer Winter, Command Ice and Snow

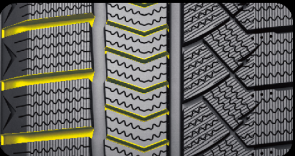
Frostora PW30

WINTER

Rim Size	16"-22"inch
Tread Width	215-285mm
Aspect Ratio	45-65
Speed Rating	Q

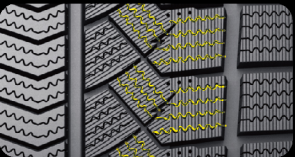
Open Shoulder Design

The main drainage grooves channel water to both sides of the tire, enhancing the tire's water drainage performance.



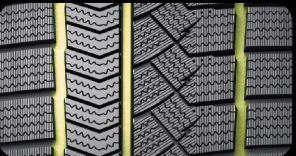
3D Winter Deep Grooves

Lightning-shaped 3D deep groove design enhances the tire's braking performance during winter driving.



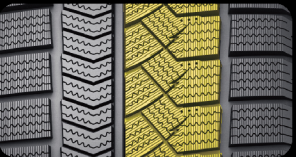
3 Main Grooves Design

Rapidly expels snow and water, ensuring safe driving and riding in winter.



Staggered Pattern Blocks Design in Tread Center

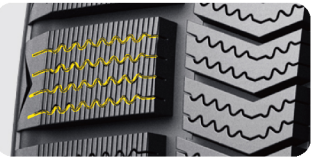
Enhances the overall rigidity of the tread pattern, improving grip and driving stability on icy and snowy roads.



Designed for every safety-conscious user, it ensures that the tires cling to the road like suction cups when driving on icy and snowy surfaces, delivering exceptional grip. This effectively prevents starting skids and cornering slides, significantly enhancing driving stability.

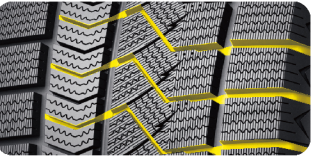
Dense Sipes Pattern Design

The multi-directional and dense sipe design, with 15% more sipes than mainstream products, can effectively increase the tire's friction on snow and improve water and snow drainage capacity by 10%.



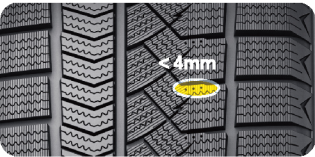
Through-Type Pattern Transverse Grooves

Effectively expels snowmelt and enhances snow-carrying capacity.



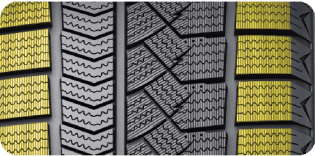
Wear Safety Warning

When the tread depth is less than 4mm, the wear indicator disappears. At this point, the ice performance degrades by more than 60%, and the tires need to be replaced promptly to ensure safe driving.



Unique Fine Pattern Design

The unique fine groove decorative design enhances the recognition of the tread pattern and brand, serving as the brand's visual signature.





Frostorma PW30

Inch	Size	Ply Rating	Speed Rating	Load Index	Load Capacity (kg)	Inflation Pressure (kpa)	Standard Rim	Section Width	Overall Diameter
16	215/65R16		Q	98	750	250	6½J	221	686
17	215/60R17		Q	96	710	250	6½J	221	690
	225/60R17		Q	99	775	250	6½J	228	702
	225/65R17		Q	102	850	250	6½J	228	724
	235/65R17	XL	Q	108	1000	290	7J	240	738
	265/65R17		Q	112	1120	250	8J	272	776
18	215/55R18		Q	95	690	250	7J	226	693
	225/50R18		Q	95	690	250	7J	233	683
	225/55R18		Q	98	750	250	7J	233	705
	225/60R18		Q	100	800	250	6½J	228	727
	235/50R18		Q	97	730	250	7½J	245	693
	235/55R18		Q	100	800	250	7½J	245	715
	235/60R18		Q	103	875	250	7J	240	739
	235/65R18		Q	106	950	250	7J	240	763
	245/60R18		Q	105	925	250	7J	248	751
	265/60R18		Q	110	1060	250	8J	272	775
	265/65R18		Q	114	1180	250	8J	272	801
19	225/55R19		Q	99	775	250	7J	233	731
	235/50R19		Q	99	775	250	7½J	245	719
	235/55R19		Q	101	825	250	7½J	245	741
	235/60R19	XL	Q	107	975	290	7J	240	765
	245/55R19		Q	103	875	250	7½J	253	753
	255/55R19	XL	Q	111	1090	290	8J	265	763
	255/60R19		Q	109	1030	250	7½J	260	789
	265/55R19	XL	Q	113	1150	290	8½J	277	775
20	235/50R20	XL	Q	104	900	290	7½J	245	744
	235/55R20		Q	102	850	250	7½J	245	766
	245/45R20	XL	Q	103	875	290	8J	243	728
	245/50R20		Q	102	850	250	7½J	253	754
	255/45R20	XL	Q	105	925	290	8½J	255	738
	255/50R20	XL	Q	109	1030	290	8J	265	764
	255/55R20	XL	Q	110	1060	290	8J	265	788
	275/45R20	XL	Q	110	1060	290	9J	273	756
21	265/45R21	XL	Q	108	1000	290	9J	266	771
22	285/45R22	XL	Q	114	1180	290	9½J	285	815



Winter, Under control.
Ice and Snow, By Design.

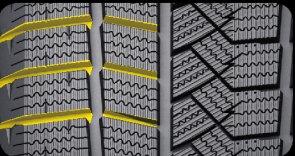
Frostora PW39

WINTER

Rim Size	13"-19" inch
Tread Width	165-255mm
Aspect Ratio	40-70
Speed Rating	Q

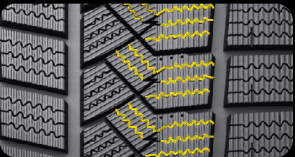
Open Shoulder Design

The main drainage grooves channel water to both sides of the tire, enhancing the tire's water drainage performance.



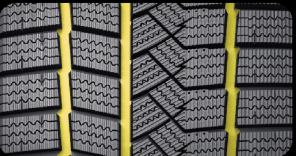
3D Winter Deep Grooves

Lightning-shaped 3D deep groove design enhances the tire's braking performance during winter driving.



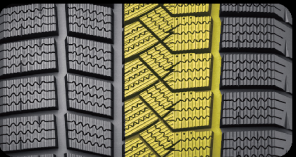
3 Main Grooves Design

Rapidly expels snow and water, ensuring safe driving and riding in winter.



Staggered Pattern Blocks Design in Tread Center

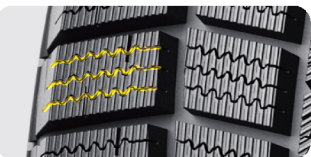
Enhances the overall rigidity of the tread pattern, improving grip and driving stability on icy and snowy roads.



Designed for every safety-conscious user, it ensures that the tires cling to the road like suction cups when driving on icy and snowy surfaces, delivering exceptional grip. This effectively prevents starting skids and cornering slides, significantly enhancing driving stability.

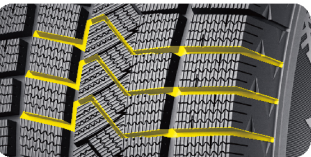
Dense Sipes Pattern Design

The multi-directional and dense sipe design, with 15% more steel sheets than mainstream products, can effectively increase the tire's friction on snow and improve water and snow drainage capacity by 10%.



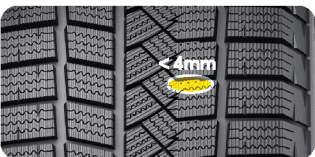
Through-Type Pattern Transverse Grooves

Effectively expels snowmelt and enhances snow-carrying capacity.



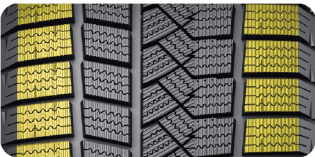
Wear Safety Warning

When the tread depth is less than 4mm, the tread wear indicator disappears. At this point, the ice traction decreases over 60%, and the tires need to be replaced promptly to ensure safe driving.



Unique Fine Sipes Design

The unique fine sipes decorative design enhances the recognition of the tread pattern and brand, serving as the brand's visual signature.





Frostopa PW39

Inch	Size	Ply Rating	Speed Rating	Load Index	Load Capacity (kg)	Inflation Pressure (kpa)	Standard Rim	Section Width	Overall Diameter
13	165/70R13		Q	79	437	250	5.00B	170	562
14	175/70R14		Q	84	500	250	5J	177	602
15	185/60R15		Q	84	500	250	5½J	189	603
	185/65R15		Q	88	560	250	5½J	189	621
	195/60R15		Q	88	560	250	6J	201	615
	195/65R15		Q	91	615	250	6J	201	635
16	195/60R16		Q	89	580	250	6J	201	640
	205/55R16		Q	91	615	250	6½J	214	632
	205/60R16		Q	92	630	250	6J	209	652
	215/55R16	XL	Q	97	730	290	7J	226	642
	215/60R16		Q	95	690	250	6½J	221	664
	225/60R16	XL	Q	102	850	290	6½J	228	676
17	205/55R17		Q	91	615	250	6½J	214	658
	215/50R17		Q	91	615	250	7J	226	648
	215/55R17		Q	94	670	250	7J	226	668
	225/45R17	XL	Q	94	670	290	7½J	225	634
	225/50R17		Q	94	670	250	7J	233	658
	225/55R17		Q	97	730	250	7J	233	680
18	225/45R18	XL	Q	95	690	290	7½J	225	659
	235/45R18	XL	Q	98	750	290	8J	236	669
	245/45R18		Q	96	710	250	8J	243	677
19	235/40R19	XL	Q	96	710	290	8½J	241	671
	235/45R19		Q	95	690	250	8J	236	695
	245/45R19	XL	Q	102	850	290	8J	243	703
	255/45R19		Q	100	800	250	8½J	255	713

Smooth Rides, Steadfast Protection

Bliztrac PW36

STUD

Rim Size	13"-22"inch
Tread Width	155-315mm
Speed Rating	Q-T

Silent & Comfortable Stud Layout

Optimized stud placement effectively absorbs impact noise and reduces harsh frequencies, ensuring smooth and quiet driving on icy and snowy roads while significantly enhancing ride comfort.



"Z"-Type Balanced Design

The combination of Z-shaped and block patterns ensures strong grip on icy and snowy surfaces, while balancing wear resistance, rolling resistance, and noise performance.



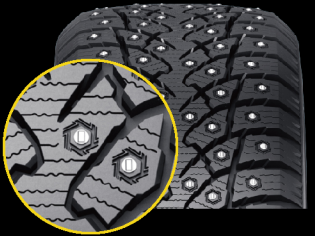
Wide Tread Design

A larger contact area effectively disperses driving stress, improving braking and acceleration stability as well as grip.



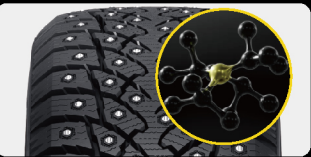
Reinforced Stud Hole Design

Each stud hole is reinforced and precisely formed to secure the anti-skid studs at the optimal protrusion height, maximizing ice-biting grip while reducing the risk of loosening or loss.



High-Performance Winter Compound

Innovative hybrid technology and bio-based materials deliver excellent grip in extreme low temperatures while maintaining stability in milder climates, with a low rolling resistance design that supports energy efficiency and environmental protection.



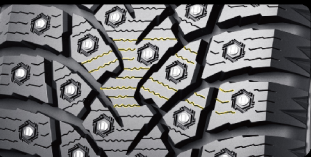
Open Shoulder Design

The open shoulder structure helps eject accumulated snow and slush from both sides of the tyre, keeping the tread clean and improving traction and passability on icy and snowy roads.



3D Sipe Design

Multi-directional 3D sipes continuously bite into ice and snow during driving, enhancing grip while reducing tread deformation for improved stability.



Inch	Size	Ply Rating	Speed Rating	Load Index	Load Capacity (kg)	Inflation Pressure (kpa)	Standard Rim	Section Width	Overall Diameter
13	155/70R13		T	75	387	250	4.50B	157	548
	175/70R13		T	82	475	250	5.00B	177	576
14	175/65R14	XL	T	86	530	290	5J	177	584
	175/70R14		T	84	500	250	5J	177	602
	185/60R14		T	82	475	250	5½J	189	578
	185/65R14	XL	T	90	600	290	5½J	189	596
	185/70R14	XL	T	92	630	290	5½J	189	616
15	185/55R15	XL	T	86	530	290	6J	194	585
	185/60R15	XL	T	88	560	290	5½J	189	603
	185/65R15		T	88	560	250	5½J	189	621
	195/55R15		T	85	515	250	6J	201	595
	195/60R15	XL	T	92	630	290	6J	201	615
	195/65R15	XL	T	95	690	290	6J	201	635
	205/65R15		T	94	670	250	6J	209	647
16	195/55R16	XL	T	91	615	290	6J	201	620
	205/55R16	XL	T	94	670	290	6½J	214	632
	205/60R16	XL	T	96	710	290	6J	209	652
	205/65R16		T	95	690	250	6J	209	672
	215/55R16	XL	T	97	730	290	7J	226	642
	215/60R16	XL	T	99	775	290	6½J	221	664
	215/65R16	XL	T	102	850	290	6½J	221	686
	215/70R16		T	100	800	250	6½J	221	708
	225/70R16	XL	T	107	975	290	6½J	228	722
	245/70R16	XL	T	111	1090	290	7J	248	750
	245/75R16		T	111	1090	250	7J	248	774
17	205/50R17	XL	T	93	650	290	6½J	214	638
	215/45R17	XL	T	91	615	290	7J	213	626
	215/50R17	XL	T	95	690	290	7J	226	648
	215/55R17	XL	T	98	750	290	7J	226	668
	215/60R17	XL	T	100	800	290	6½J	221	690
	215/65R17	XL	T	103	875	290	6½J	221	712
	225/45R17	XL	T	94	670	290	7½J	225	634
	225/50R17	XL	T	98	750	290	7J	233	658
	225/55R17	XL	T	101	825	290	7J	233	680
	225/60R17	XL	T	103	875	290	6½J	228	702
	225/65R17	XL	T	106	950	290	6½J	228	724
	235/45R17	XL	T	97	730	290	8J	236	644
	235/55R17	XL	T	103	875	290	7½J	245	690
	235/65R17	XL	T	108	1000	290	7J	240	738
	265/65R17		T	112	1120	250	8J	272	776
	265/70R17		T	115	1215	250	8J	272	804
18	215/55R18		T	95	690	250	7J	226	693
	225/40R18	XL	T	92	630	290	8J	230	637
	225/45R18	XL	T	95	690	290	7½J	225	659
	225/50R18	XL	T	99	775	290	7J	233	683
	225/55R18	XL	T	102	850	290	7J	233	705
	225/60R18	XL	T	104	900	290	6½J	228	727
	235/45R18	XL	T	98	750	290	8J	236	669
	235/50R18	XL	T	101	825	290	7½J	245	693
	235/55R18	XL	T	104	900	290	7½J	245	715
	235/60R18		T	103	875	250	7J	240	739

Inch	Size	Ply Rating	Speed Rating	Load Index	Load Capacity (kg)	Inflation Pressure (kpa)	Standard Rim	Section Width	Overall Diameter
18	245/40R18	XL	T	97	730	290	8½J	248	653
	245/45R18	XL	T	100	800	290	8J	243	677
	245/60R18	XL	T	109	1030	290	7J	248	751
	255/35R18	XL	T	94	670	290	9J	260	635
	255/40R18	XL	T	99	775	290	9J	260	661
	255/55R18	XL	T	109	1030	290	8J	265	737
	265/60R18	XL	T	114	1180	290	8J	272	775
	275/40R18	XL	T	103	875	290	9½J	278	677
	275/65R18		T	116	1250	250	8J	279	815
19	235/35R19	XL	T	91	615	290	8½J	241	647
	235/50R19	XL	T	103	875	290	7½J	245	719
	235/55R19	XL	T	105	925	290	7½J	245	741
	245/40R19	XL	T	98	750	290	8½J	248	679
	245/45R19		T	98	750	250	8J	243	703
	245/55R19	XL	T	107	975	290	7½J	253	753
	255/35R19	XL	T	96	710	290	9J	260	661
	255/45R19	XL	T	104	900	290	8½J	255	713
	255/50R19		T	103	875	250	8J	265	739
	255/55R19		T	107	975	250	8J	265	763
	275/40R19	XL	T	105	925	290	9½J	278	703
20	235/55R20		T	102	850	250	7½J	245	766
	245/40R20	XL	T	99	775	290	8½J	248	704
	255/45R20		T	101	825	250	8½J	255	738
	255/55R20	XL	T	110	1060	290	8J	265	788
	275/35R20	XL	T	102	850	290	9½J	278	700
	275/40R20		T	102	850	250	9½J	278	728
	275/45R20	XL	T	110	1060	290	9J	273	756
	275/50R20	XL	T	113	1150	290	8½J	284	784
	275/55R20	XL	T	117	1285	290	8½J	284	810
	275/60R20		T	115	1215	250	8J	279	838
	285/50R20		T	112	1120	250	9J	297	794
	315/35R20		T	106	950	250	11J	320	728
21	275/40R21	XL	T	107	975	290	9½J	278	753
	275/45R21	XL	T	110	1060	290	9J	273	781
	295/40R21		T	107	975	250	10½J	301	769
	315/35R21	XL	T	111	1090	290	11J	320	753
22	275/40R22	XL	T	107	975	290	9½J	278	779
	315/35R22	XL	T	111	1090	290	11J	320	779
16	185/75R16C		R	104/102	1800/3400	475	5J	184	684
	195/75R16C		R	107/105	1950/3700	475	5.5J	196	698
	235/65R16C		R	115/113	2430/4600	475	7J	240	712
	225/75R16C		R	116/114	2500/4720	475	6J	223	744
	245/75R16LT	10PR	Q	120/116	1400/1250	550	7J	248	774
	265/70R17LT	10PR	Q	121/118	1450/1320	550	8J	272	804
	275/65R18LT	8PR	Q	119/116	1360/1250	450	8J	279	815
20	275/60R20LT	8PR	Q	119/116	1360/1250	450	8J	279	838